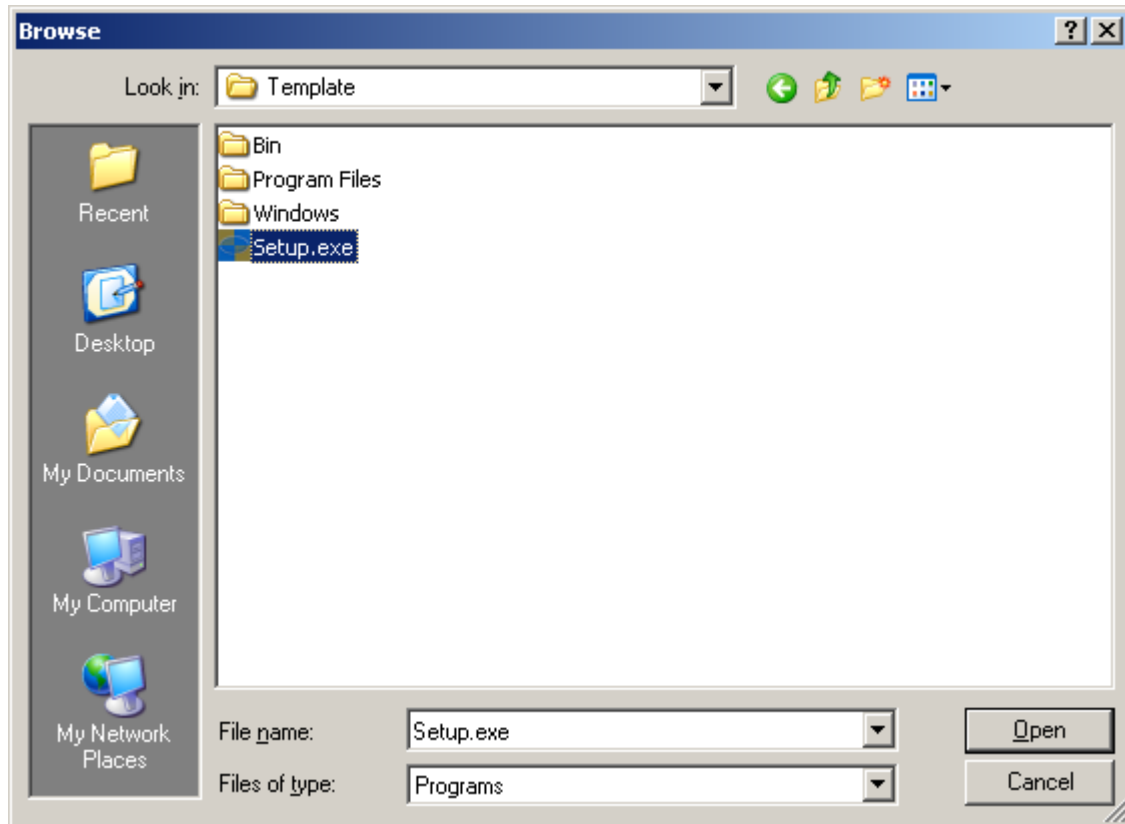


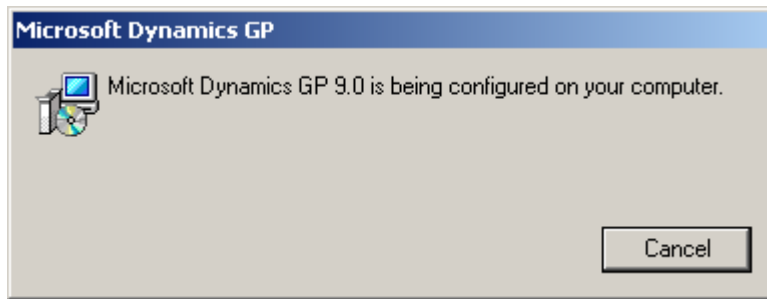
Dynamics Workstation Installation Instructions

Installation Package Method

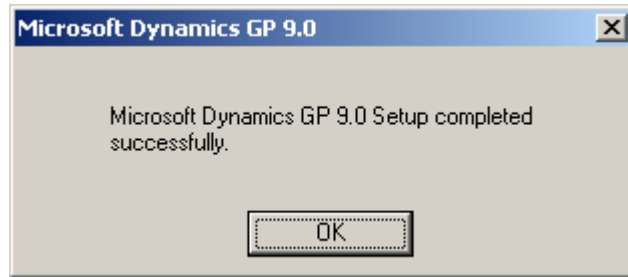
Workstations must be on Windows 2000 SP4 or higher or Windows XP SP2 or higher. The MDAC version on the workstations needs to match the version on the server, which is 2.8 as of 11/1/2006. Data corruption could occur if the versions do not match. FRx 6.7 requires MDAC 2.8.



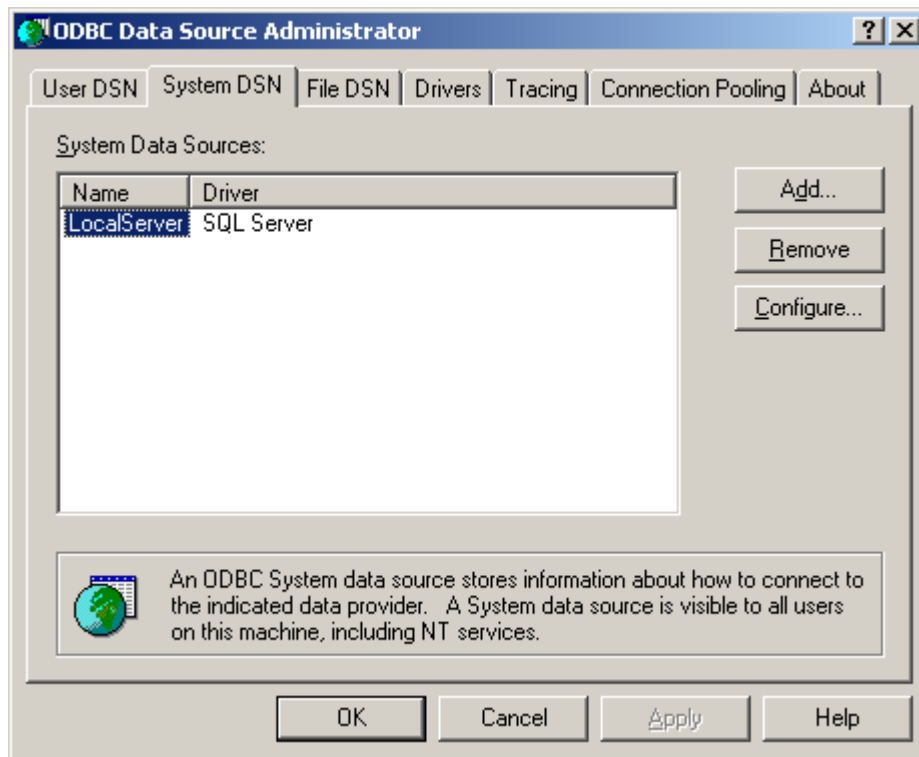
1. Go to Start>>Run. Browse to the server. There will be a shared directory. In that directory is a Template directory. Double-click Setup.exe in the Template directory.
2. If the computer needs any prerequisites, you will be prompted to install them. You may need to reboot the workstation.



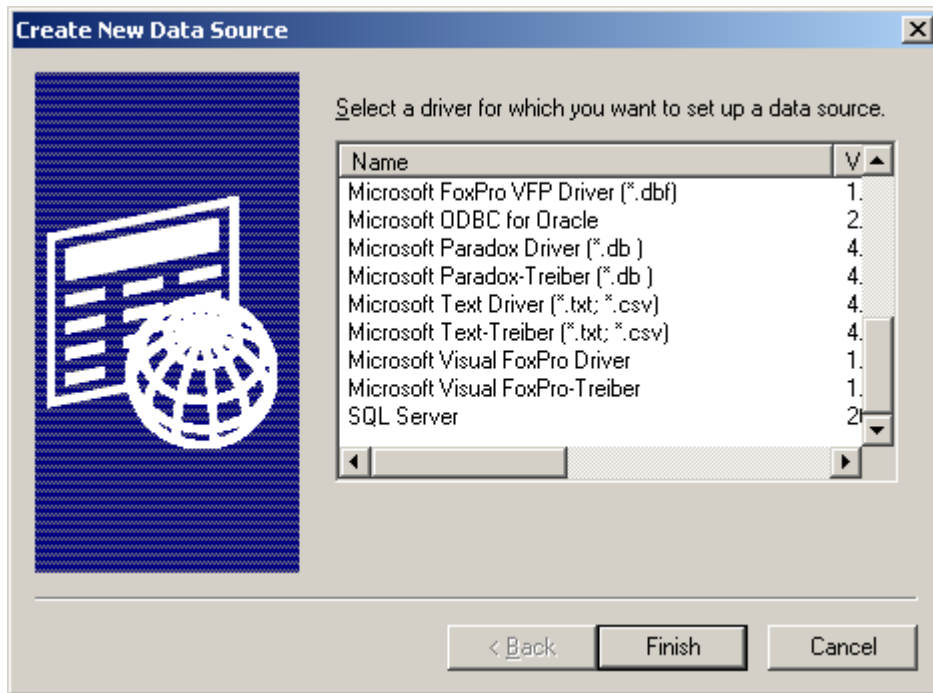
3. You will receive the message window above as the install procedure runs.



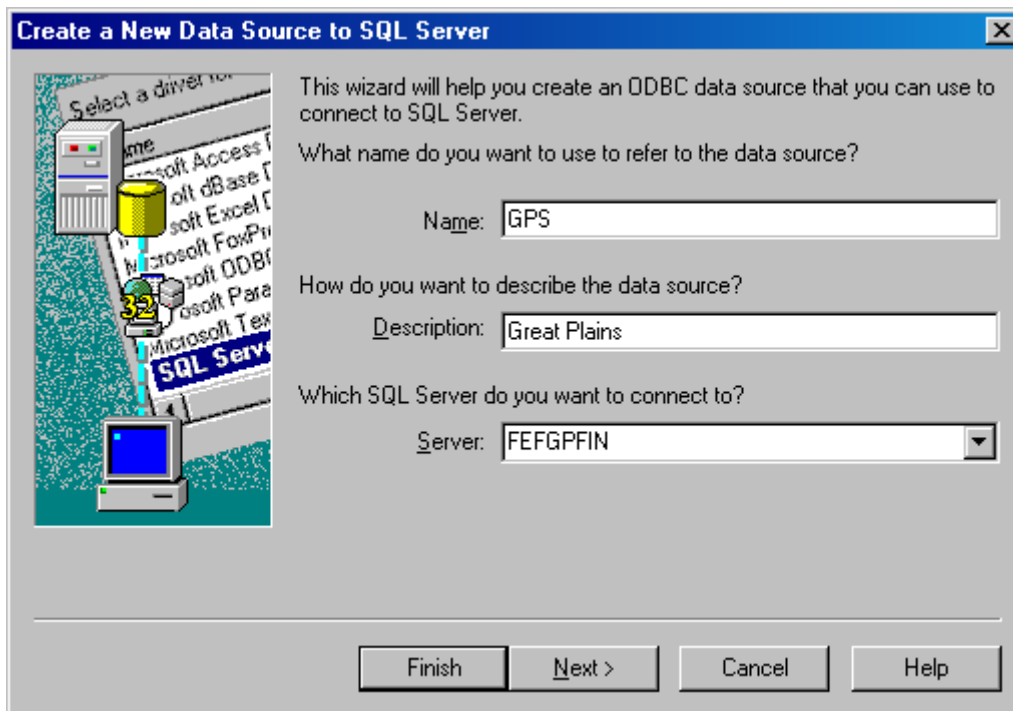
4. Click **OK** when the installation process is complete.



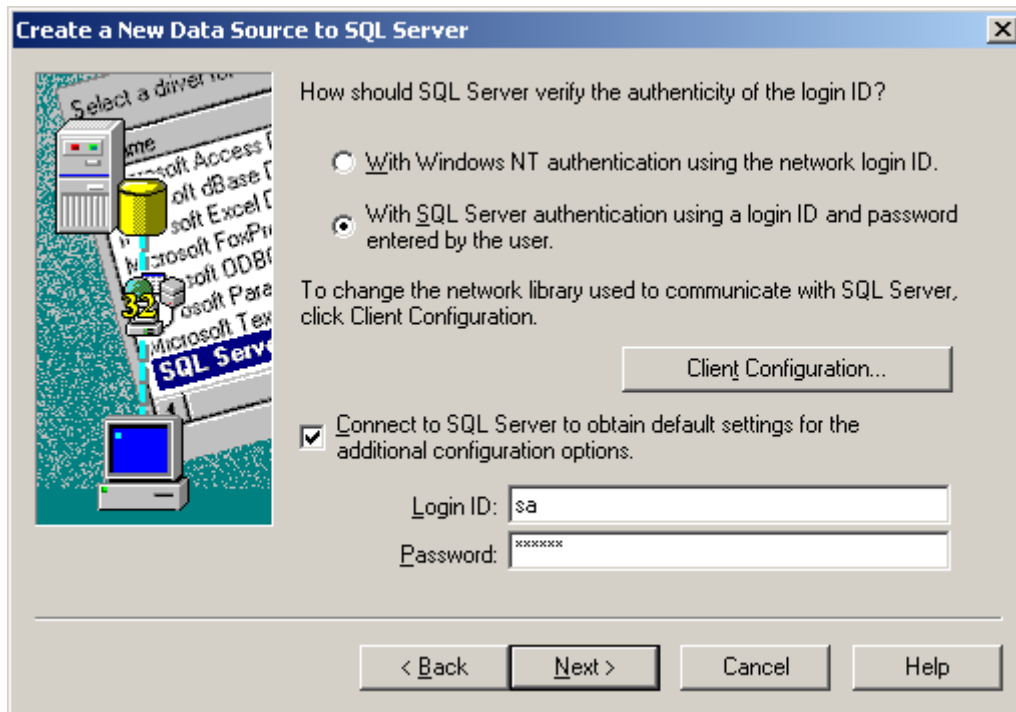
5. Go to Start>>Settings>>Control Panel>>Administrative Tools>>Data Sources (ODBC). Click on the System DSN tab.



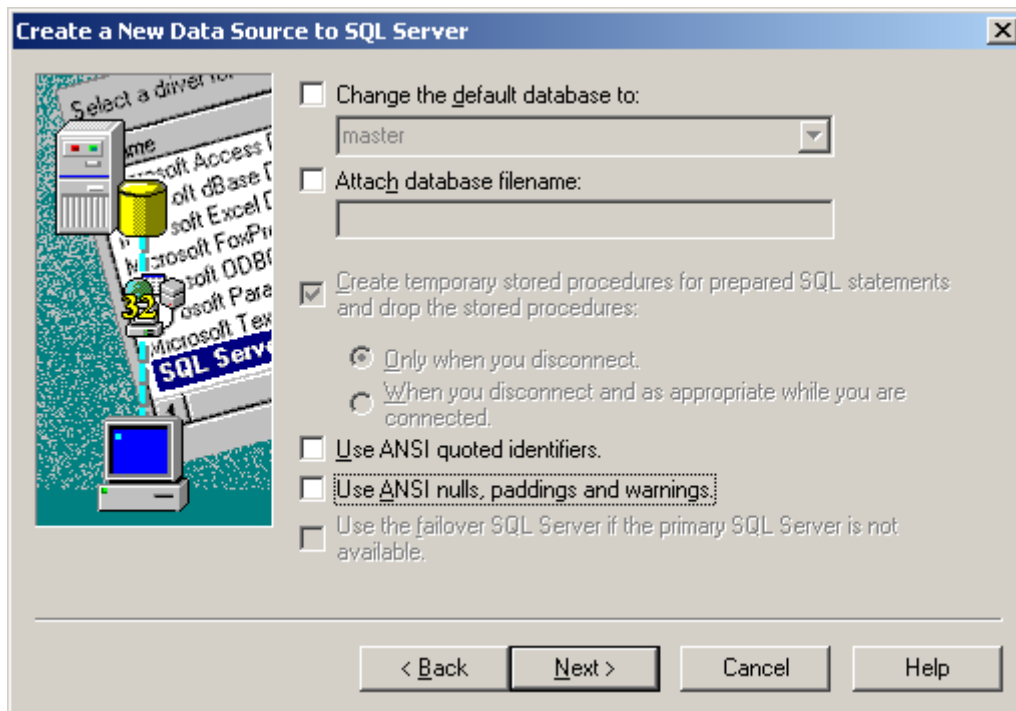
6. Scroll down to the bottom and select SQL Server. Click **Finish**.



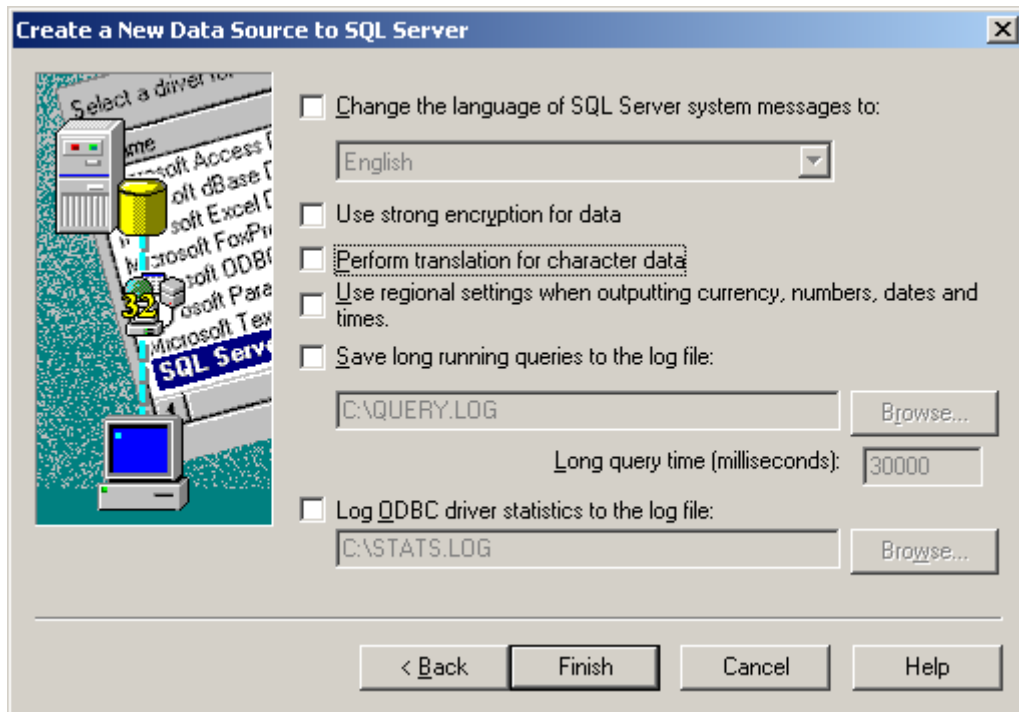
7. Name the data source consistent with other workstations. For description, use "Great Plains." Click on the drop down next to server and select the correct server. Click **Next**.



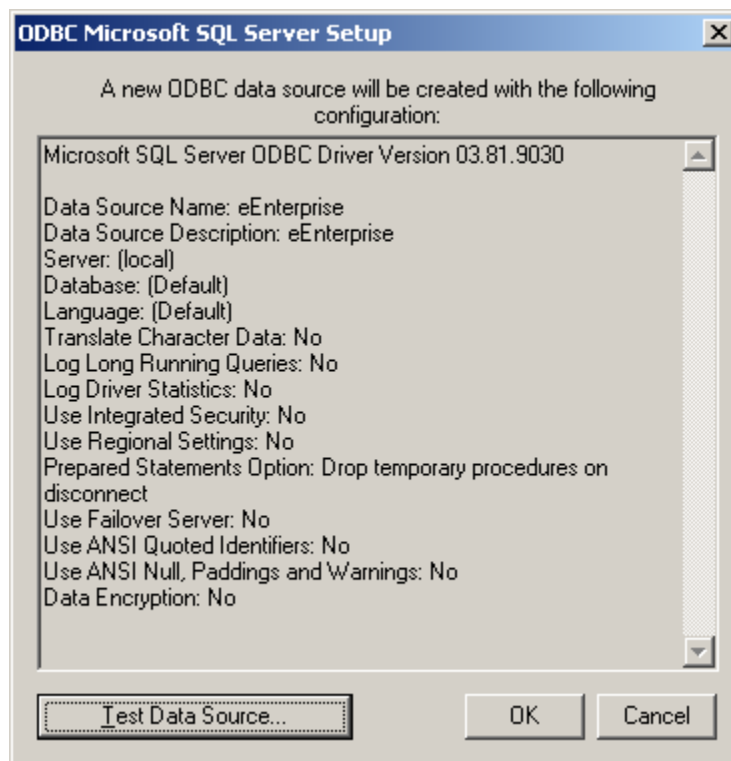
8. Change the authenticity method to “With SQL Server authentication....” Leave the checkbox for “Connect to SQL Server...” selected. Change the Login ID to “sa”, and type in the sa password. Click **Next**.



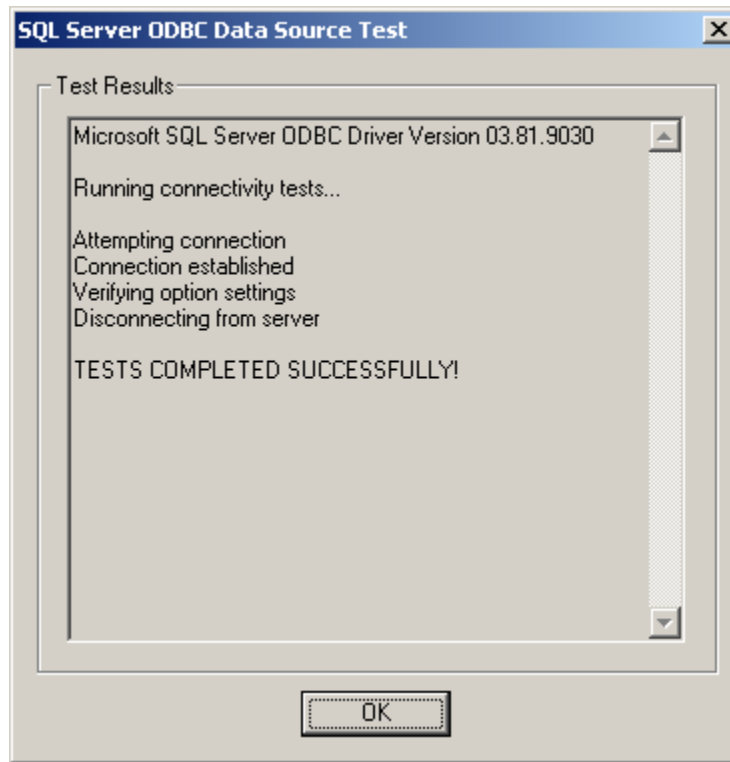
9. UNCHECK the two boxes related to using ANSI. Click **Next**.



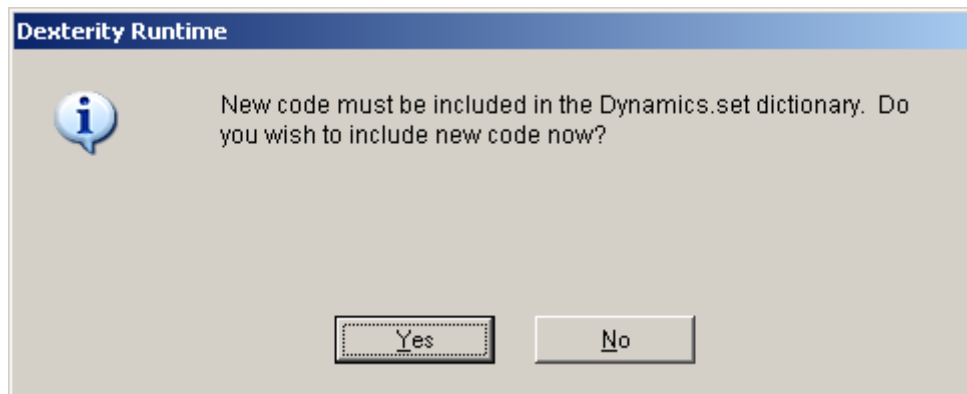
10. UNCHECK the box for “Perform translation for character data”. Click **Finish**.



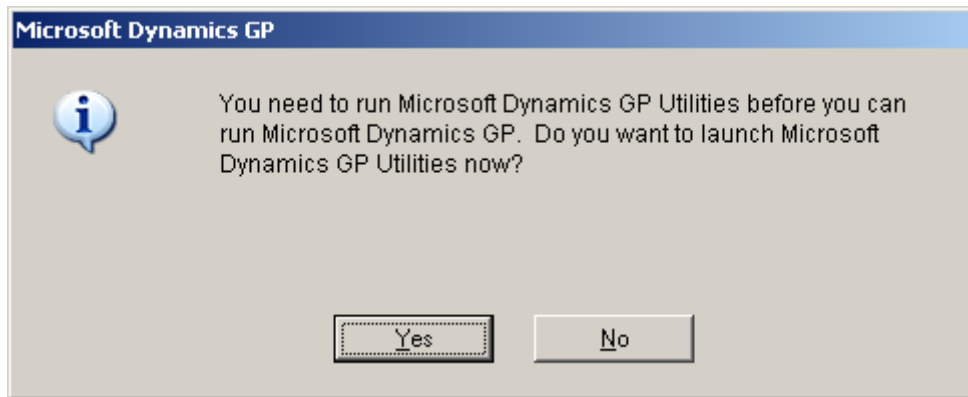
11. Click the box to **Test Data Source**.



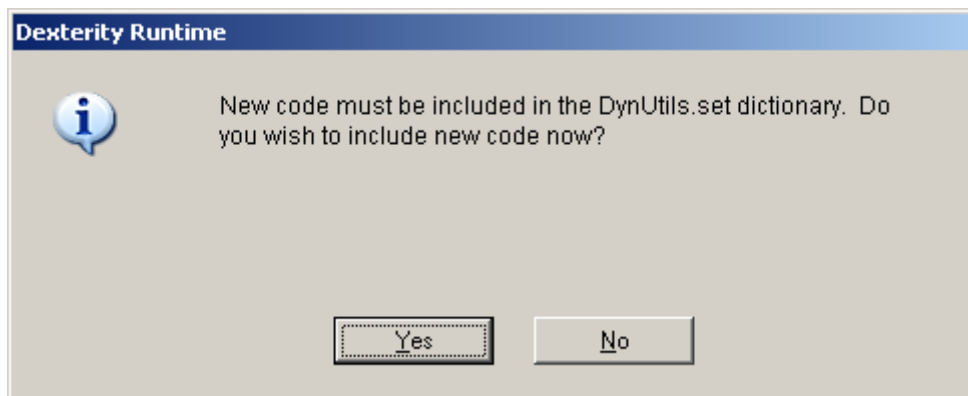
12. You should get a “Tests Completed Successfully” message. Click **OK**, and then click **OK** on the SQL Server Setup Window. Close any remaining windows.
13. Launch Dynamics by going to Start>>Programs>>Microsoft Dynamics>>GP 9.0>>GP.



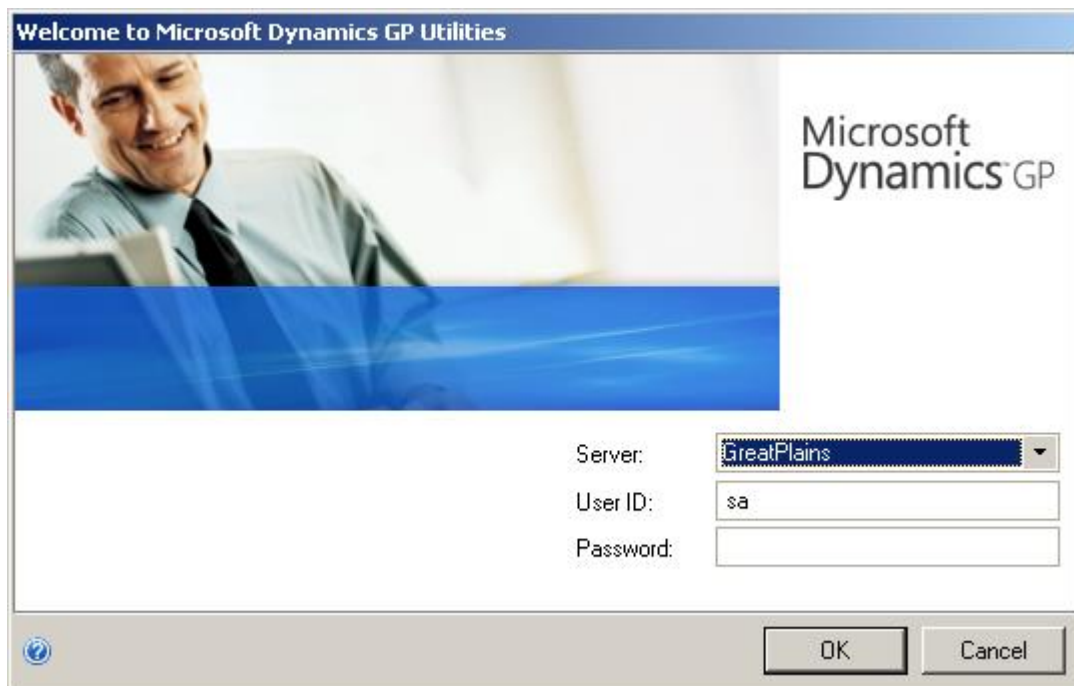
14. Click **Yes** to include new code.



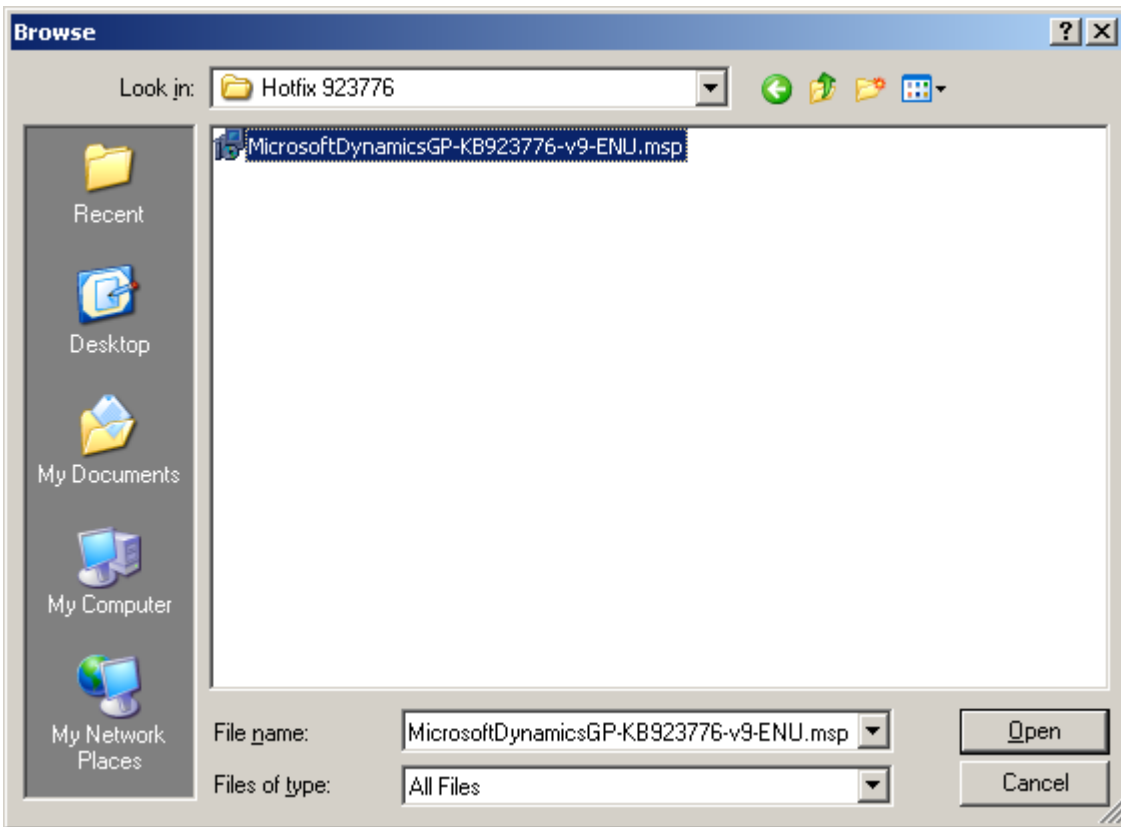
15. Click **Yes** to launch GP Utilities.



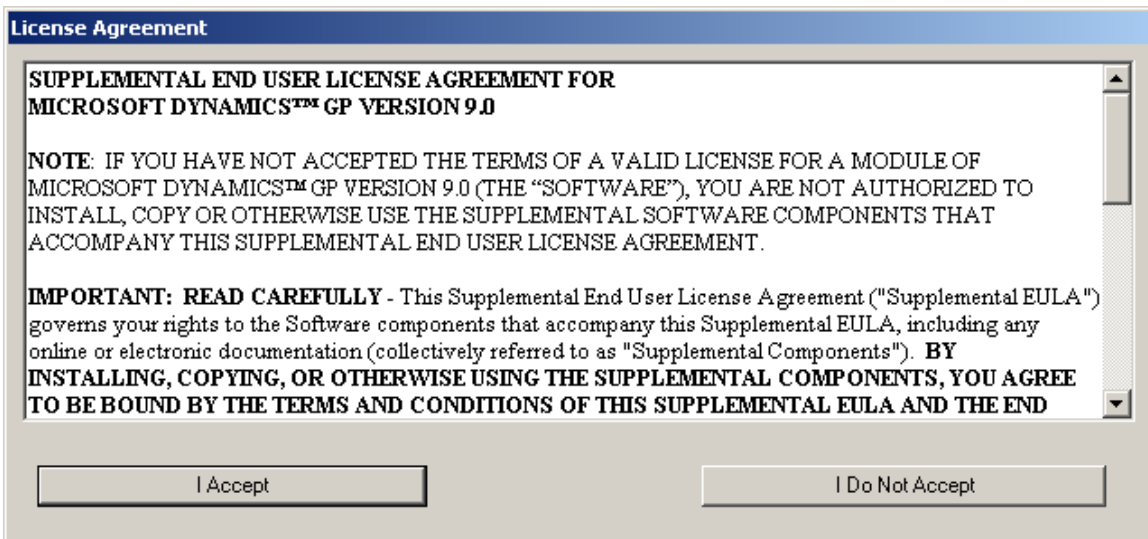
16. Click **Yes** to include the new code in DynUtils.set.



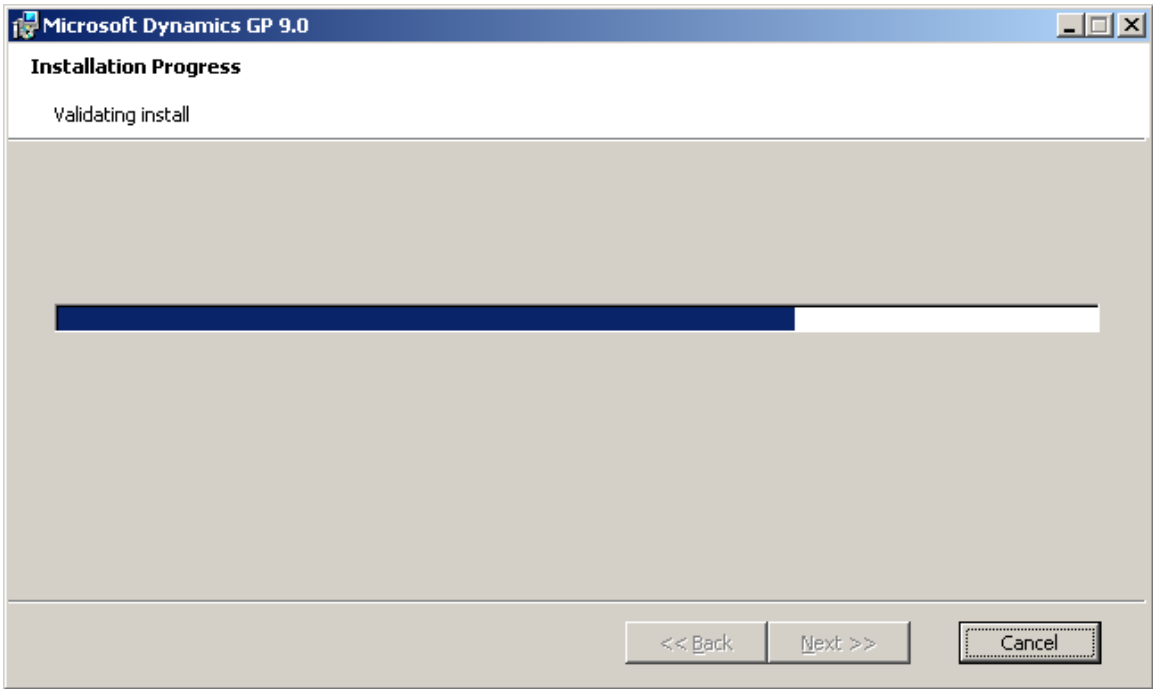
17. Click **Cancel** on the login screen.



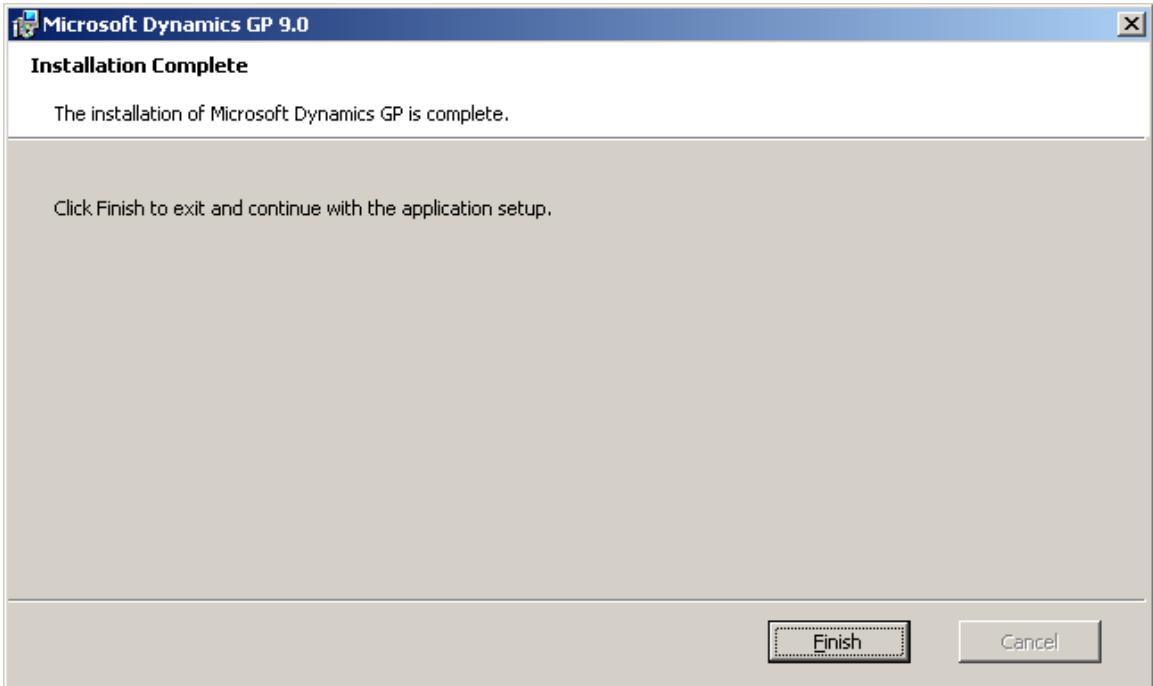
18. Browse to the server. Locate and run the service pack on the server.



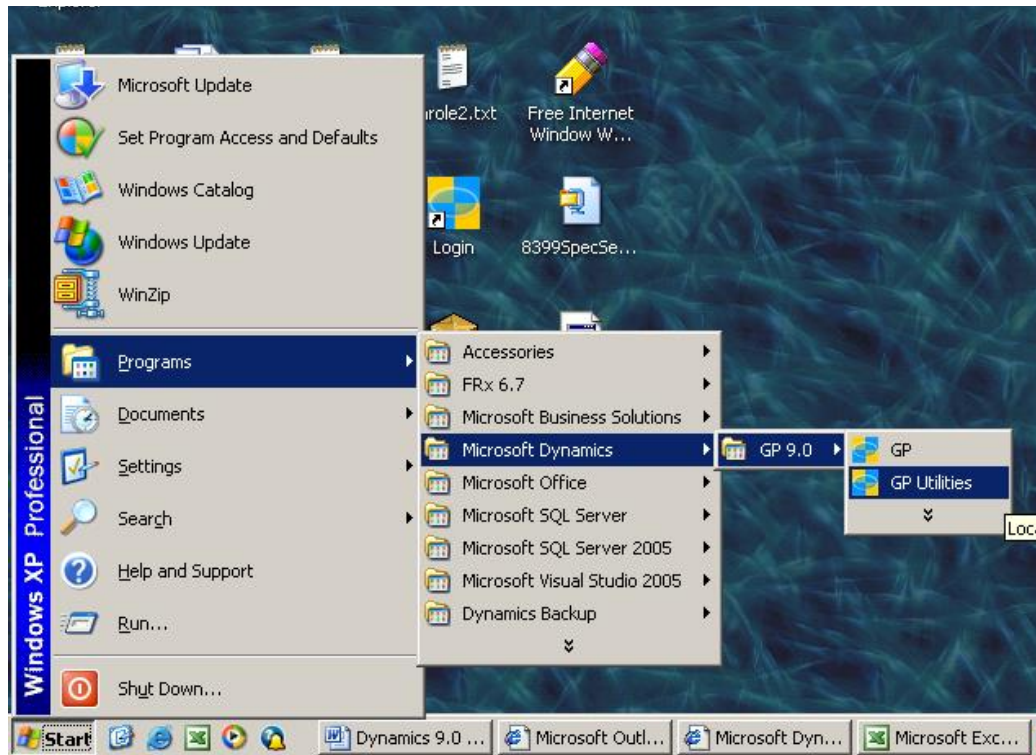
19. Click **I Accept** for the License Agreement.



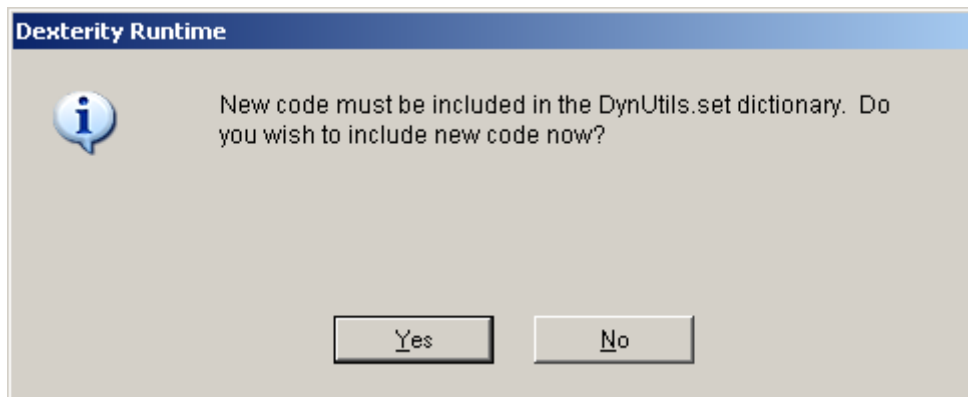
20. The Validating Install window will appear. It will take several minutes for this process to complete.



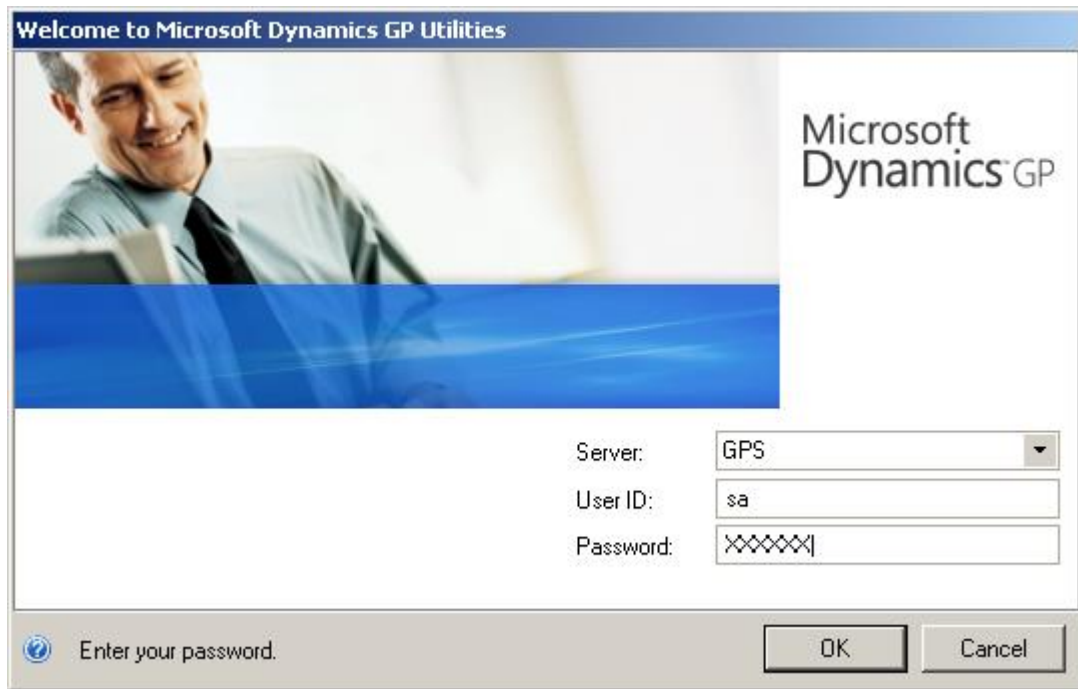
21. Click **Finish**.



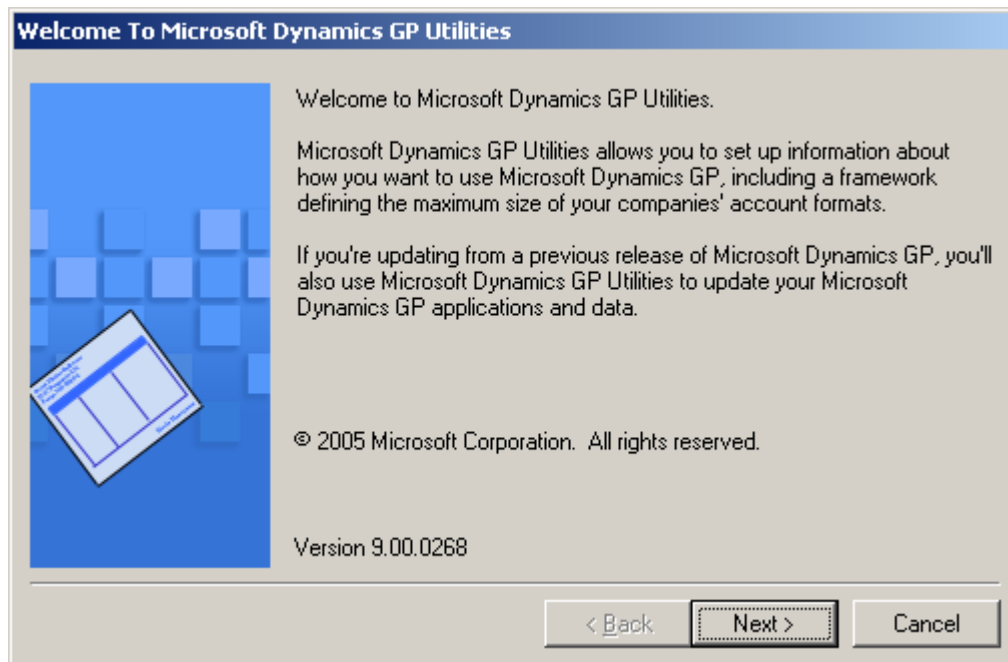
22. Launch Dynamics Utilities by going to Start>>Programs>>Microsoft Dynamics>>GP 9.0>>GP Utilities.



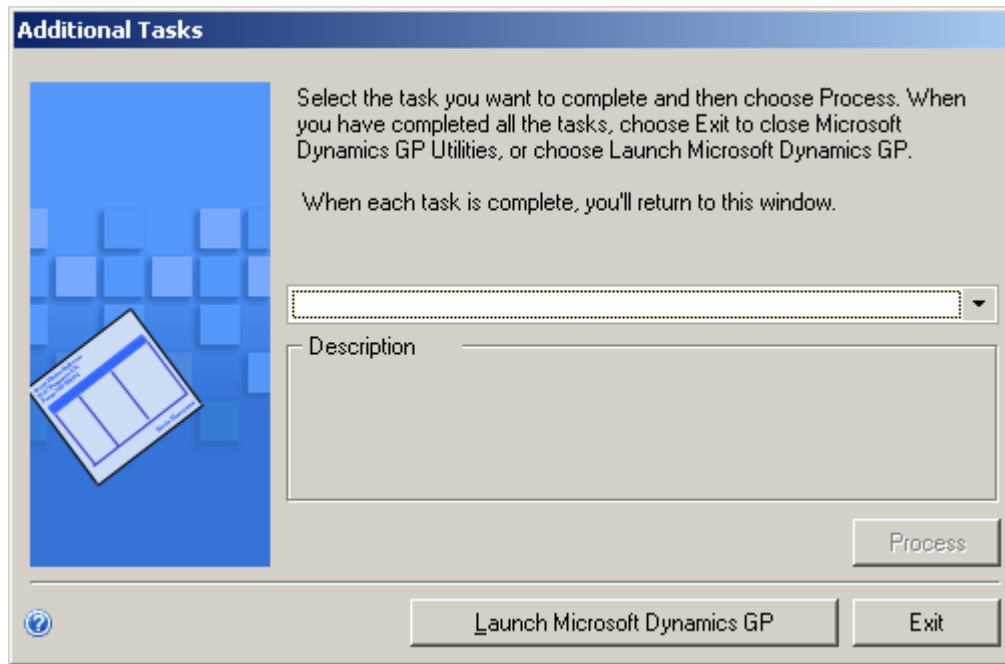
23. Click **Yes** to include the new code.



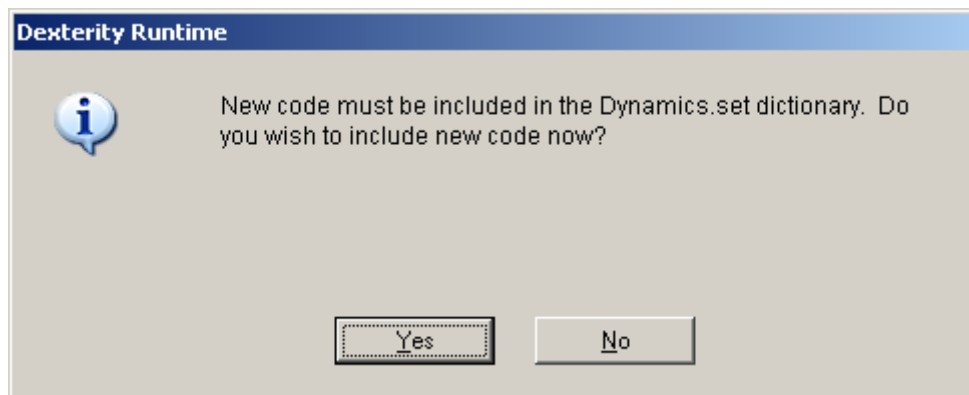
24. On the login screen, select your server, which is the ODBC data source set up in Step 7, above. Enter the sa password, and click **OK**.



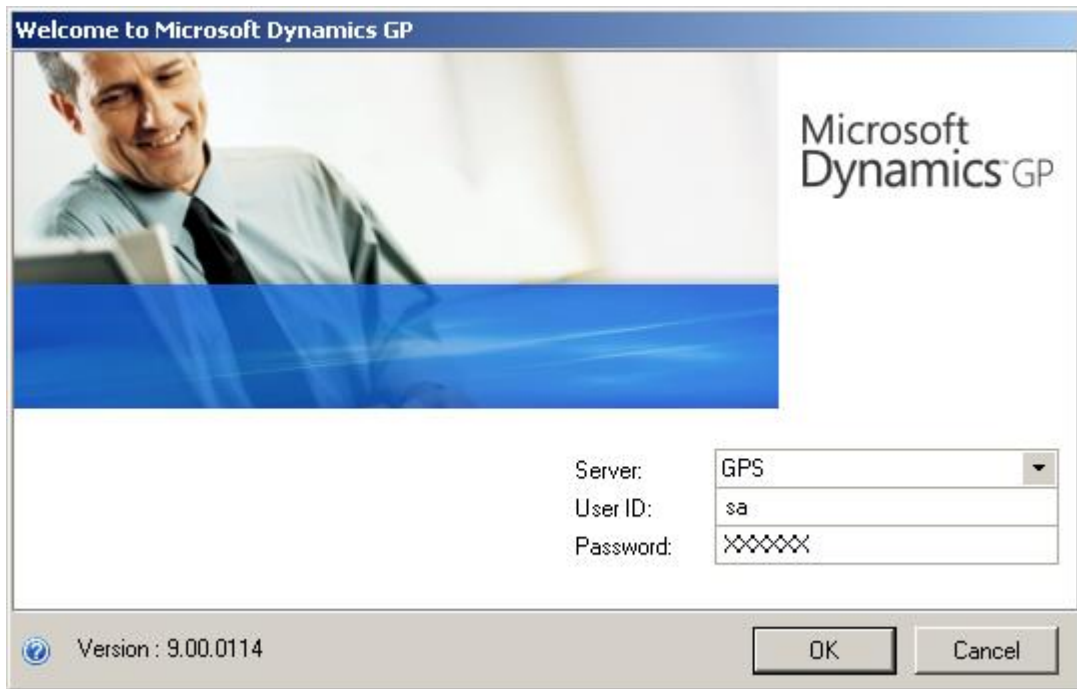
25. Click **Next** on the welcome screen.



26. On the Additional Tasks window, click **Launch Microsoft Dynamics GP**.



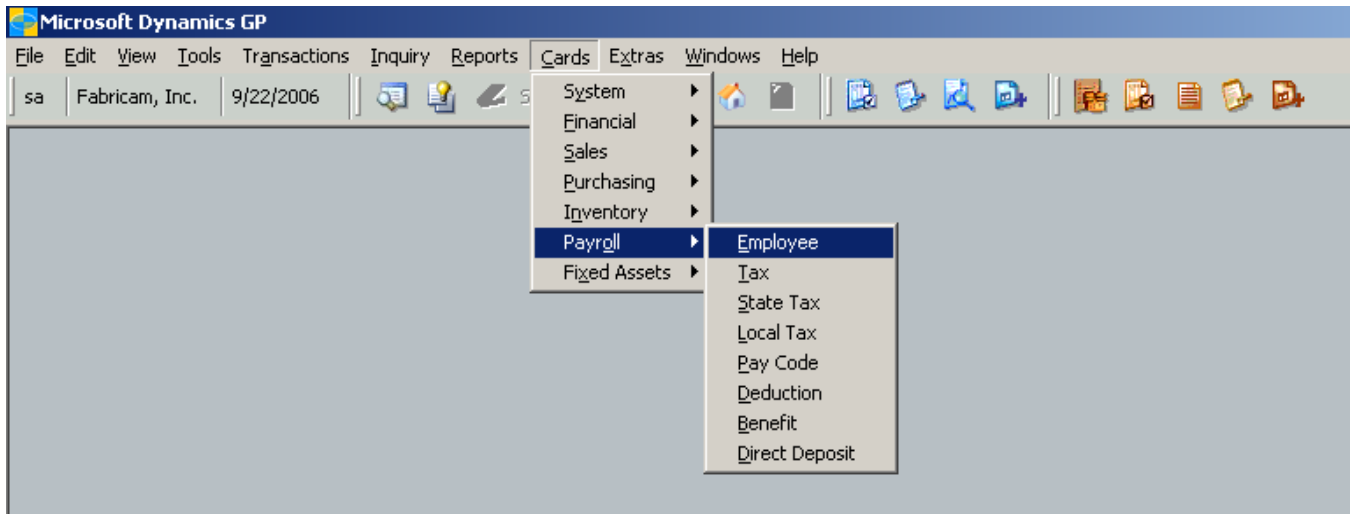
27. Click **Yes** to include the new code.



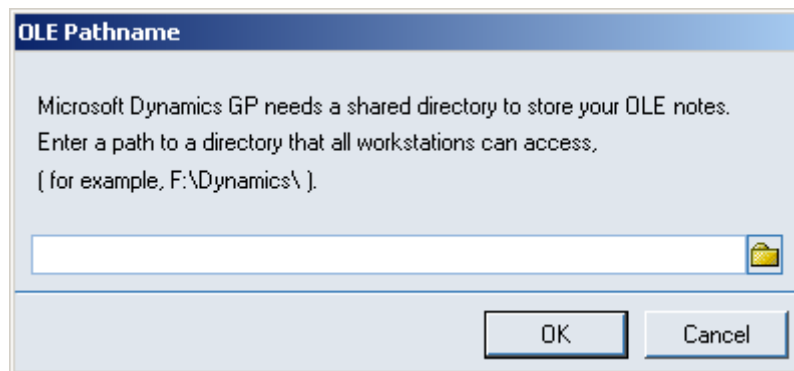
28. On the login screen, select the server if necessary, and log into Dynamics.



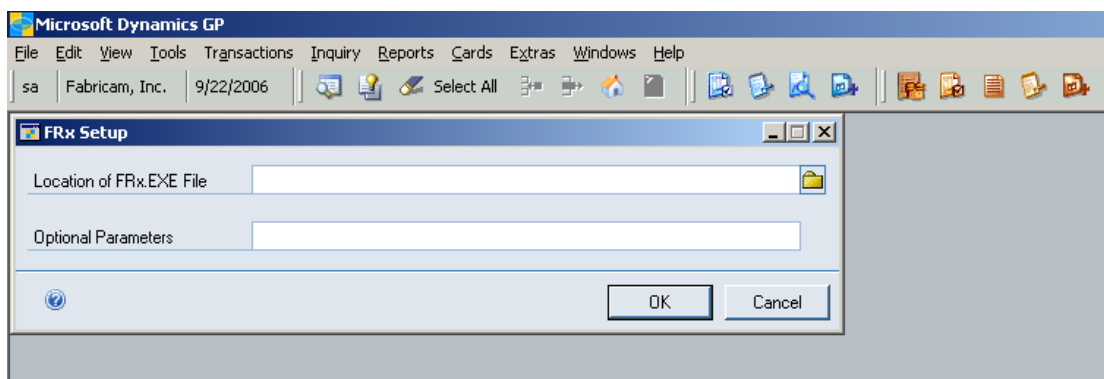
29. Select a company, and click **OK**.



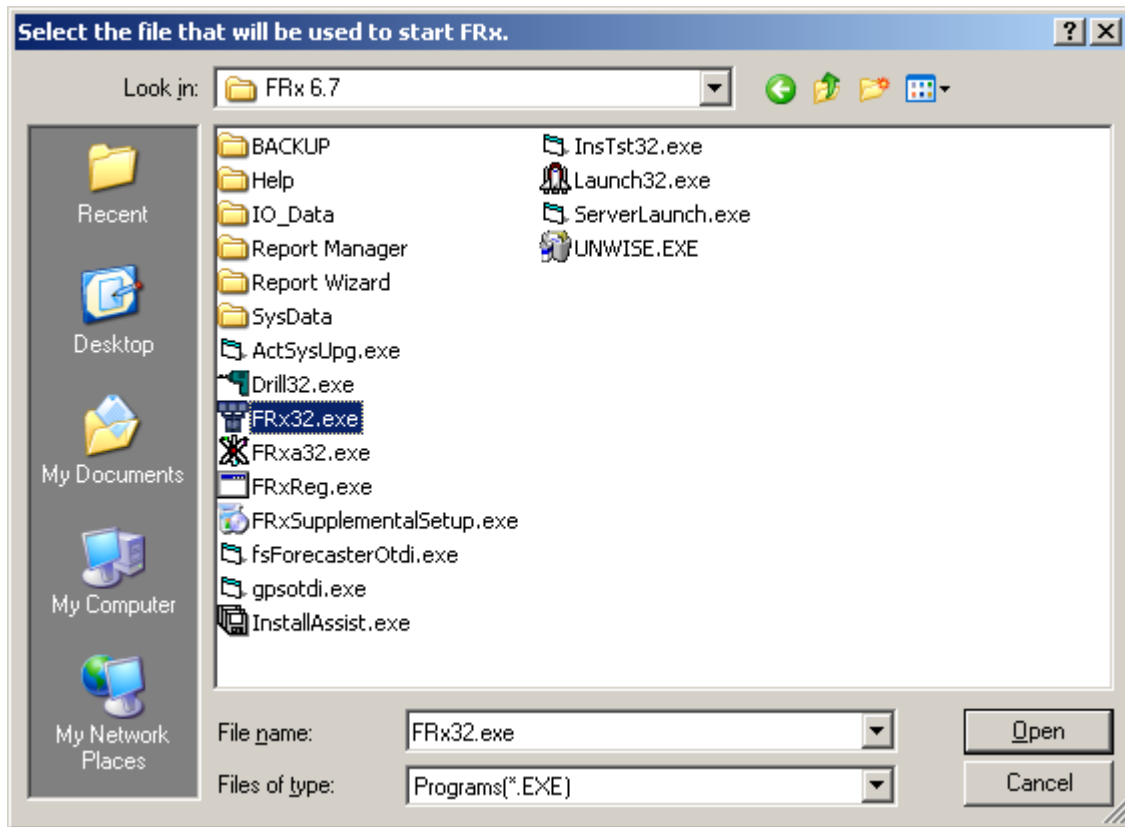
30. To set the path to the OLE notes directory, go to Cards>>Payroll>>Employee, even if you are not registered for the payroll module.



31. You will be prompted for the location of your OLE notes. Either browse out to this location or manually enter it. Click **OK**, and close the employee maintenance window.



32. If the workstation will be using FRx, install that application per the separate instructions. After that is complete, in Dynamics go to Reports>>Financial>>FRx. You will be prompted to select the FRx.exe file.



33. Browse to C:\Program Files\FRx Software\FRx 6.7 and select FRx32.exe. Click **Open**.
34. FRx will launch. You can close FRx when it reaches the login screen.
35. Close Dynamics.
36. The installation is complete.